



MUSICAL INSPIRATIONS

April 27, 2024 at 7:30pm
Keppel Auditorium, Catawba College

AUDIENCE SURVEY

MUSICAL INSPIRATIONS

Help us craft unforgettable musical moments! Share your feedback on the candidate and concert. Please hand your completed survey to a symphony team member. Your input helps guide our path to musical excellence!

CANDIDATE QUESTIONS

This Candidate seems to have a good rapport with the orchestra.

This Candidate seems to have a good rapport with the audience, is charismatic, and communicates well.

This Candidate made the concert a positive experience for the listener.

This Candidate would be a good Music Director for the Salisbury Symphony.

RATING SCALE:

Strongly Disagree → Strongly Agree



CONCERT QUESTIONS

How satisfied are you with your experience at tonight's event with the Salisbury Symphony?

How likely are you to recommend a future Salisbury Symphony experience to a friend, family member, or colleague?

RATING SCALE:

1 2 3 4 5
6 7 8 9 10

1 2 3 4 5
6 7 8 9 10



Scan this QR code to take the Audience Survey!



**Proud to support the
Salisbury Symphony!**

**"Music to the ears
of the community"**

David Post

Orchestra Series

A River Runs Through It
September 9, 2023 | 7:30pm
Conductor: Peter Askim



Stars & Space
January 20, 2024 | 7:30pm
Conductor: Kelly Corcoran

Enchanting Sounds
March 9, 2024 | 7:30pm
Conductor: Michelle Di Russo



Musical Inspirations
April 27, 2024 | 7:30pm
Conductor: Kalena Bovell

Hope & Lifting
May 18, 2024 | 7:30pm
Conductor: Daniel Wiley



**All Orchestra Series Performances are held at Keppel
Auditorium, Catawba College**

Serenade Series

Unknown Duets

October 20, 2023 | 5:30pm

Rowan-Cabarrus

Community College



Now & Then

November 3, 2023 | 5:30pm

Little Tubman Theatre

Livingstone



Piano Trio

February 25, 2024 | 3:00pm

The Hotel

Livingstone College



Violin/Viola

April 20, 2024 | 3:00pm

The Norvell

Salisbury - NC



Mandolins & More

June 9, 2024 | 6:00pm

Hedrick Theatre

Catawba College



Tickets and more information:

www.salisburysymphony.org





The White Rabbit Cocktail Parlour

A place for members who love music, cocktails, great food, and a fabulous ambiance.

Join us before or after the Symphony to enjoy an evening full of experiences to excite all your senses.

We are open from 5pm until 10pm Wednesday & Thursday. From 5pm until 10pm (or later) on Friday and Saturday. Make your reservations for a cocktail, dessert, or dinner. (Kitchen is open until 10pm or later with reservations)

We are located at 5 Easy Street behind the Water Works Gallery. You may park in the F&M Bank lot, or the Trolley Barn lot.

For reservations you may contact us at (704) 645-7670.

Memberships are available for purchase at your first visit for a cost of \$5/day per person, \$25/year for an individual, or \$40/year for a couple.

For additional information visit us at www.WhiteRabbitCocktailParlour.com or visit us on Facebook.

THE ANIMAL CARE CENTER OF SALISBURY



1500 E Innes Street
Salisbury, NC 28147
704-637-0227



Godley's
GARDEN CENTER
& NURSERY, Inc.

2281 Statesville Blvd
Salisbury, NC 28147
704-638-0082
www.godleysgardencenter.com

JOIN THE SYMPHONY GUILD!

A vibrant group of volunteers who LOVE the fact that Salisbury, North Carolina has its OWN orchestra! Bragging rights HERE!

Speak with a team member today!



IMMERSE YOURSELF IN MUSIC

6 Concentrations

1 of the only Popular Music Programs in the U.S.

Faculty with Real World Experience

Pursue music your way



Small School. Big Opportunities.

EST.
1851

CATAWBA
COLLEGE

Transform. Inspire. Belong.

1.800.CATAWBA
catawba.edu/music



**Change the Face of American Theatre
While Connecting with the World**

Catawba College's Theatre Arts program seeks to cultivate the growth of well-rounded artists and scholars who are accomplished leaders and theatre-makers, valuing creativity and collaboration as a way of understanding and connecting with the world.

YOUR DREAM CAR
YOUR BUDGET!



Toyota Dealer Salisbury NC

Welcome to Cloninger Toyota! As a renowned full-service Toyota dealer in Salisbury, NC, we help shoppers from Mooresville to Huntersville to Lexington with all their automotive needs.

Whether you're searching for a new Toyota car or need an oil change for your current one, we're here to help you out.

511 Jake Alexander Blvd S | Salisbury, NC 28147

www.cloningertoyota.com

**The Cloninger Toyota
Advantage Program**

**Always working to be
"Just Better" for you!**



Just Better

 Reserve your instrument today! 



Buy/trade/consign/lessons/repairs

514 Salisbury Ave. Spencer, NC 28159



877-230-4282



Be an original.



**ROWAN
COUNTY**

NORTH CAROLINA

**ROWAN
CREATES**

Arts Council
Rowan County, NC



MEALS on WHEELS
ROWAN

**Ready to Deliver?
Volunteer Drivers
Needed**

704-633-0352
mowrowan.org

SALISBURY FLOWER SHOP

1628 WEST INNES STREET
KETNER CENTER • SALISBURY, NC

704-633-5310

www.salisburyflowershop.net

Fresh & Silk Flowers • Weddings
Balloons • Gifts

**"WE WANT TO BE
YOUR FLOWER SHOP"**

Cynthia A. Thomas
Certified Public Accountant

109 Ackert Avenue
Salisbury, NC 28144
(704) 636-0911
catcpa@yahoo.com

D O W N T O W N



SALISBURY

N O R T H C A R O L I N A

A Main Street Original



Explore historic Downtown Salisbury, a Carolina original since 1753. Enjoy our unique shops and dining, antiques stores, museums, galleries, festivals and more.

With 25 blocks of Downtown, including a farmer's market, theaters, shops, two breweries, a historic train depot and our beautiful new Bell Tower Green Park, we have something for everyone.

A ROUND OF APPLAUSE FOR THE STAFF & STUDENTS OF

ROWAN-SALISBURY SCHOOLS

PUBLIC SCHOOLS PROVIDE

- * Licensed NC Teachers in over 100 areas including:
Arts Education - Core Subjects - Career & Technical Education - Exceptional Children, etc.
- * Real-world experiences through connections with a broad and diverse community
- * Transparent academic accountability



"EDUCATION IS THE FOUNDATION FOR ALL WE DO IN LIFE... IT SHAPES WHO WE ARE AND WHAT WE ASPIRE TO BE." - FORMER NC GOVERNOR JIM HUNT

Stitchin' Post & Gifts
GIFTS • APPAREL • ACCESSORIES

104 South Main Street
Salisbury, NC 28144

704-637-0708

SOUTH MAIN
BOOK COMPANY



An independent bookstore in an independent
community

110 S Main Street | 704.630.9788

.calm

89.9 FM / WDAV.ORG / MOBILE APP / SMART SPEAKER



The Classical Oasis For Your Mind, Body, and Soul



SUMMER MUSIC CAMP

A two-week camp filled with music, learning, and fun. Grow on your instrument, meet fellow musical friends, and unleash your creativity.

AFTER SCHOOL STRINGS

Beginners and intermediate players can enhance their skills through group instruction. An engaging and supportive environment to learn and grow musically.



YOUTH ORCHESTRA

Led by a dedicated director, you'll have the opportunity to refine your talents and perform alongside talented peers.

NUTCRACKER CHORUS

Experience the magic of the holiday season by singing with the Salisbury Symphony at their annual Nutcracker performance.



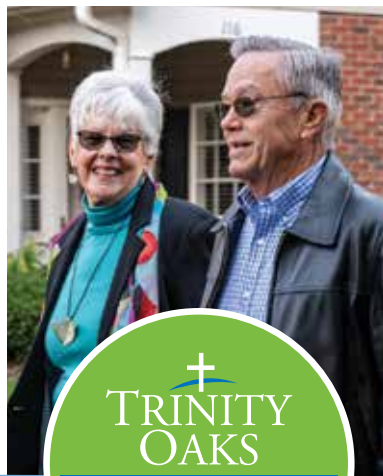
saliburysymphony.org/learn





SMILING FACES & FRIENDSHIPS ABOUND

- 24-Hour Security
- Bistro, Outdoor & Full-Service Dining
- Fitness Center
- Full-Service Bank
- Hair Salon
- Housekeeping
- Indoor Heated Pool
- Library
- Lifelong Learning
- Local Transportation
- Maintenance Free
- On & Off-Site Activities
- Pet Friendly




TRINITY
OAKS

ACTIVE SENIOR LIVING
HEALTH & REHAB
TRINITY AT HOME

Trinity Oaks: 704-633-1002

Trinity at Home: 704-603-2776

Trinity Oaks Health & Rehab: 704-637-3784



67% of people who abuse prescription drugs get them from family or friends. Secure and dispose of medications properly.

He gets his musical ability from his dad.

She gets her love for classical music from her mom.

They get their drugs from their grandparents' medicine cabinets.

LOCK YOUR MEDS

For more information, visit www.YSUProwan.org



Help us make musical memories for everyone!



Donate Today



salisburysymphony.org/giving



Your local stationer
providing quality design services and products
since 2011

the lettered *Lily*
design studio

113 West Fisher Street · Salisbury, NC 28144
704.754.5973
www.theletteredlily.com

  #theletteredlily



ABOUT US

The Salisbury Symphony Orchestra is a professional symphony orchestra home-based in Salisbury, North Carolina.

We offer Orchestra Concerts consisting of forty-five to ninety musicians that perform five to seven concerts annually, typically in Keppel Auditorium on the Catawba College campus or Varick Auditorium on the Livingstone College campus. Serenade performances featuring small ensembles from our orchestra are known to play throughout Rowan County in intimate venues.

We perform a large variety of repertoire from early classical works to recent pops selections, often with guest soloists and performers of note from all over the world. Particularly poignant offerings are our annual Nutcracker Performance and free outdoor “Pops at the Post” celebration, a free, outdoor event held in downtown Salisbury and co-sponsored by the Post, an event which brings thousands of visitors to Salisbury each year.

At the Salisbury Symphony, education intertwines seamlessly with passion. After School Strings aims to spark the flames of musical talent in the young, while our Youth Orchestra offers a collaborative stage for budding prodigies to craft musical masterpieces. Experience music anew with our Summer Music Camp; a gateway for novices and a furthering journey for the advanced. For adults yearning to explore or revisit the world of strings, our Adult String Classes offer a warm, welcoming environment.

With In-school Mini-Concerts, 3rd and 4th graders get a taste of orchestral magic right in their classrooms. We also curate performances exclusively for 5th graders, introducing them to the vast symphonic landscape. Recognizing the therapeutic power of music, our Extended Care Facility Concerts aim to touch souls, offering peace and solace. And with Scholarship Opportunities, we ensure that the doors of musical discovery remain open to all, irrespective of financial backgrounds.



THANK YOU SPONSOR



**NC Arts Council
-Spark the Arts-**

**A special grant given to
select recipients in NC
whose programs and
initiatives are reimagining
and revolutionizing the
artistic landscape of this
great State.**

MUSICAL INSPIRATIONS

Conductor: Kalena Bovell

Ballade in A Minor

Samuel Coleridge -Taylor (1875 - 1912)

Violin Concerto in A Minor

Antonín Dvořák (1841 - 1904)

I. Allegro ma non troppo

II. Adagio, ma non troppo

III. Finale: Allegro giocoso, ma non troppo

Soloist - Violinist Njioma Grevious

Intermission

Lyric for Strings

George Walker (1922 - 2018)

Enigma Variations

Edward Elgar (1857 - 1934)

Please join us after the performance for a reception in Peeler Crystal Lounge to meet the candidate and the musicians!

SALISBURY SYMPHONY ORCHESTRA PERSONNEL

VIOLIN I

Daniel Skidmore,
Concertmaster
Dick Messenger Chair
In Memoriam
Richard Wohlman,
Associate Concertmaster
Sarah Womack,
Assistant Concertmaster
Mr. & Mrs. Charles Wallace
Endowed Chair
Ulric Schweizer
Rebecca Yarbrough
Judy Booth
Michelle Thompson
Roslyn Willis
Luke Benton
Chang Zhang
Amanda Matthews
Jane York

VIOLIN II

Laura Blankenship, Principal
Mr. & Mrs. James M. Norman
Endowed Chair
Katherine Miller,
Assistant Principal
Leroy T. Sellers Endowed Chair
Donna Stewart
Susan Gallimore
Wilson Pace
Jody Crafford
Cole Freeman
Mary Ellen Watson
Galina Johnson
Tabitha Metz
Kirsten Allen

VIOLA

Timothy D. Gudger, Principal
Dr. W. Gerald Cochran Chair
Kathryn Middel,
Associate Principal
Erik Johnson,
Acting Assistant Principal
Natalie Williford
Carter Bradley
Dean Burgos
Louise Campbell
Logan Strawn
Courtney Guthrie

CELLO

Ryan Graebert, Principal
Dr. Maynard & Betsy Rich
Endowed Chair
Liz Burns, Assistant Principal
Gayle Masarie
Margaret Petty
Zack Bammann
Diane Bonds
Jennifer Alexandra Johnson
Emily R. Grissing

BASS

Mara Barker, Principal
Bill & Sue Davis Chair
Virginia Masius,
Associate Principal
Tyler Reece
Tonya Steward
Rebecca Marland
Payton Baysinger

FLUTE

Carla Copland-Burns, Principal
Mr. & Mrs. Robert L. Cook
Endowed Chair
Laura Stevens

PICCOLO

Abby Simoneau

OBOE

Mary Ashley Barrett, Principal
Eric P. Slipp
Endowed Chair
Kimberley Tyler

CLARINET

Eileen Young, Principal
Rich Graham

BASSOON

Stephanie Lipka, Acting Principal
Bill & Gayla Bucher Chair
Rebecca Libera
Erica Yeager Thomas

CONTRABASSOON

Rebecca Libera

HORN

Tim Papenbrock, Principal
Mrs. Allen S. Johnson
Endowed Chair
Tyler Goodwin
Keith D. Grush
Melanie H. Watson
Joseph K. Goldman
Endowed Chair

TRUMPET

Luke Boudreault, Principal
Mark Hibshman
Steve Sutton

TROMBONE

Chris Ferguson, Principal
Bob & Lois Pruehsner
Endowed Chair
Nicholas Lewis
Sean F. Devlin

TUBA

Edward L. Baity Jr., Principal
Salisbury Symphony Guild
Endowed Chair,
In Honor of Dr. Jean Owen

TIMPANI

Peter Zlotnick, Principal

PERCUSSION

Amanda Sycamore, Principal
Beverly Naiditch,
Assistant Principal
Gilson Fearnow

EXECUTIVE DIRECTOR

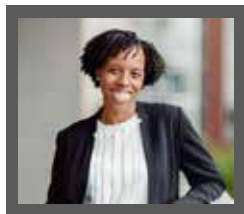
Hunter Scott Safrit

PRODUCTION MANAGER

Calysto Baker

PERSONNEL MANAGER

Mark Hibshman

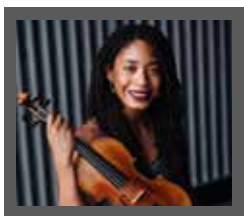


Kalena Bovell

Conductor

With her distinctive voice as maestra, speaker, and poet, critics praise Panamanian-American conductor Kalena Bovell as “one of the brightest stars in classical music.” (Channel 3 News, Connecticut).

Propelled by a steadfast commitment to musical excellence and community access, her recent achievements include receiving the prestigious 2024 Sphinx Medal of Excellence—the highest honor bestowed by the Sphinx Organization—and becoming the first Black woman to conduct an opera in Canada, conducting a world premiere reimagination of Scott Joplin’s *Treemonisha*. The former Assistant Conductor of the Memphis Symphony, she has also served as guest conductor with orchestras including the Minnesota Orchestra, Louisiana Philharmonic, Cincinnati Symphony, Colorado Music Festival, Hamilton Philharmonic, and the Victoria Symphony. As a guest clinician, she has worked with programs including from the New England Conservatory and The Juilliard School Pre-College.



Njioma Grevious

Violinist

Described as “superb” by the Chicago Classical Review, violinist Njioma Chinyere Grevious is an emerging and versatile solo, chamber and orchestral musician and performer. She is a graduate of The

Juilliard School and a winner of its John Erskine Prize for scholastic and artistic achievement. In 2023, Njioma won both the Robert F. Smith First Prize and the Audience Choice awards in the Senior Division of the Sphinx Competition and First Prizes for Performance and Interpretation in the 2018 Prix Ravel in Fontainebleau, France.

In 2022, she was the winner of concerto competitions at the University of Delaware and the Newark Symphony Orchestra. She was also a winner of the Music Academy of the West Keston-Max Fellowship to study and perform in the London Symphony Orchestra in November 2022.

Program Notes

Samuel Coleridge-Taylor was a noted Afro-English composer whose works thrived mostly around the decades surrounding the turn of the 20th century. Born and raised near London, he received much of his musical training from his mother's side of the family, being taught the violin by her father from an early age. He was educated at the Royal College of Music, switching from violin to composition, and studying the latter with Charles Villiers Stanford. Following the completion of his degree, he became a professional musician, and was eventually appointed to a professorship at the Crystal Palace School of Music. He also conducted the orchestra at the Croydon Conservatoire. His greatest success as a composer was the choral trilogy, *Scenes from the Song of Hiawatha*. Its opening section, "*Hiawatha's Wedding Feast*," still retains a foothold in the repertoire today.

The *Ballade in A Minor, Opus 33*, was commissioned by and composed for the Three Choirs Festival 1898 series of concerts (on the strength of a recommendation by Sir Edward Elgar) while Coleridge-Taylor was still a student at the Royal College of Music. The work is scored for a large orchestra featuring woodwinds in pairs (including piccolo), full brass, timpani, cymbals, and strings; it lasts a little over 11 minutes. Coleridge-Taylor alternates primarily between two thematic ideas, the first being very rhythmic, with the second being much more lyrical and songlike; the second iteration of the A theme becomes gentler before returning to the B theme, giving this work a bit of an archlike form, basically a rondo plus a short coda that brings the work to its conclusion.

Antonin Dvořák (1841-1904) Concerto for Violin and Orchestra in A Minor, Opus 53

Antonin Dvořák was one of the first leading composers of a Czech national style (immediately following Bedrich Smetana), and he incorporated many elements of folk and dance music into his compositions. He was born in the village of Nelahozeves, Bohemia, 15 or so miles north of the capital city of Prague. A butcher's son, he began violin lessons at the age of six, adding organ and piano in his early teens. Dvořák played viola in the Bohemian Provisional Theatre Orchestra, leaving the orchestra in 1871 in order to focus more closely on his composing. His works began to be

performed in Prague a year later, and became known to a wider European audience as the result of first place finishes in the Austrian State Prize (composition) in 1874, 1876, and 1877. Dvořák served as Director of the National Conservatory of Music in New York City from 1892 until 1895, and encouraged his students to incorporate the music of African-Americans and Native-Americans into their compositions to strengthen an emerging American nationalistic style.

Dvořák's *Violin Concerto in A Minor, Opus 53*, was composed in 1879. Its premiere took place in Prague in 1883, featuring František Ondříček as soloist (he also gave the Vienna and London premieres.) The work is scored for woodwinds in pairs, 4 horns, 2 trumpets, timpani, and strings, and takes approximately 30 minutes to perform. It is crafted in the usual three-movement pattern of fast-slow-fast, and the first two movements are played with no break in the music. The soloist enters very early into the first movement, rather than following an orchestral exposition, and is featured in two short quasi-cadential passages before the orchestra continues with the movement's thematic materials. It's a beautiful movement, alternating between the strong rhythms and lilting lyricism so closely associated with the folk music of Dvořák's native Bohemia. The second movement sings through all of the alternating solo violin and orchestra tutti passages, with the third movement concluding as a rollicking *furiant*, reminiscent of Dvořák's *Slavonic Dance No. 1*. This concerto is a true virtuoso showpiece for the soloist, while keeping the orchestra equally involved, and remains a mainstay in today's repertoire for this combination.

George Walker (1922-2018) Lyric for Strings

George Theophilus Walker, a native of Washington, D.C., was the son of West Indian-American parentage; his father, originally from Jamaica, emigrated to the United States, becoming a physician following his graduation from Temple University. Young George began piano lessons at age five, giving his first public recital at Howard University when he was 14 years old. He was accepted into the Oberlin College Conservatory of Music shortly thereafter, and graduated with highest honors at age 18. From there, he pursued graduate studies at the Curtis Institute of Music, where his teachers included Rudolf Serkin (piano), William Primrose and Gregor Piatigorsky (chamber music), and Rosario Scalero (composition).

He received Artist Diplomas in piano and in composition from Curtis in 1945. His professional life was equally balanced between being a concert pianist, a composer, and a teacher. Orchestras with whom he appeared as piano soloist include the Philadelphia Orchestra and the Baltimore Symphony. Significant faculty appointments included the Peabody Institute at Johns Hopkins University, Rutgers University, and the Dalcroze School of Music. He received numerous commissions, including from the New York Philharmonic, the Cleveland Orchestra, the Boston Symphony, and the John F. Kennedy Center for the Performing Arts. In 1996, Walker was awarded the Pulitzer Prize in Music for *Lilacs for Voice and Orchestra*. He was elected to the American Academy of Arts and Letters in 1999, and in 2000 was inducted into the American Classical Music Hall of Fame.

Lyric for Strings was composed in 1946 and is dedicated to Walker's grandmother, who had passed away the previous year. It was originally conceived as the Second Movement of Walker's String Quartet No. 1, and titled, "Lament." Later, it was arranged for string orchestra, and was given its premiere performance in a radio broadcast by the student orchestra of the Curtis Institute of Music, conducted by Seymour Lipkin. Its first public performance took place the following year in Washington, featuring the National Gallery Orchestra, conducted by Richard Bales. From the George Walker website: "After a brief introduction, the principal theme is stated by the first violins with imitations appearing in the other instruments. The linear nature of the material alternates with static moments of harmony. After the second of two climaxes, the work concludes with reposeful cadences that were presented earlier."

Sir Edward Elgar (1857-1934) Variations on an Original Theme, Opus 36, "Enigma" Variations

Edward William Elgar was born in Lower Broadheath, not far from Worcester, where his father, William, worked as a piano tuner and sheet music salesman. Edward began taking piano and violin lessons by the time he was eight years old. As a teenager, he was quite active in musical activities in and about Worcester, and had also begun to compose and arrange, and eventually added conducting to his growing number of

skills. By the time he reached his mid-twenties, he had succeeded his father as organist at St. George's Roman Catholic Church in Worcester. During this same period, Caroline Alice Roberts became his student, and she would become his wife three years later. The couple relocated to London, and Elgar began to devote more of his time to composition. The 1890s saw his reputation growing, albeit slower than he would have liked. The needed breakthrough came in 1899; the London premiere of his *Enigma Variations* was an instant hit, and solidly established his international reputation. Lady Elgar's death in 1920 was a devastating blow from which he never recovered, and his creativity suffered accordingly. While he never completely stopped composing, he never completed another major work. Elgar remains the first truly great composer to come out of England since Henry Purcell.

The *Enigma Variations* were composed between 1898 and 1899, and premiered later that summer in London, conducted by Hans Richter. Shortly thereafter, Elgar revised and expanded the work; the premiere of this version took place in the middle of September at the Worcester Three Choirs Festival with Elgar on the podium, and this is the version usually played today. The theme is followed by fourteen variations. Each is in a different character, and depicts one of Elgar's friends (the work is dedicated to "my friends pictured within"), beginning with his beloved wife, Lady Alice, who is portrayed in Variation 1. Probably the best-known section of the work is Variation 9, *Nimrod*; this beautiful variation is frequently used for funerals, memorial services, and other solemn occasions, especially in England; it was featured during the Opening Ceremonies of the Games of the XXX Olympiad (held in London during the summer of 2012), and most recently, an adaptation was used in the 2017 film, *Dunkirk*. Some of the other highly descriptive imagery in the Variations include references to a viola student learning how to maneuver string crossings (V. 6), a friend with a mild stutter (V. 10), a bulldog rolling down a steep embankment into a river (V. 11), and the distant vibrations of an ocean liner engine on a sea voyage (V. 13).

**YOUR HOSTS FOR TONIGHT'S PROGRAM:
MEMBERS OF THE SALISBURY SYMPHONY'S 2023-2024 SEASON**

The Salisbury Symphony is a fully qualified 501(c)(3) nonprofit organization.

Your tax- deductible donations make up about a half of the Symphony's budget each year and are vitally important to the health of our orchestra. The Salisbury Symphony wishes to gratefully acknowledge support received from the following individuals, who have donated over \$100.00 towards the 2023-2024 Season (as of April 11, 2024):

**Conductor's Circle:
\$10,000 and Above**

Catawba College
North Carolina Arts
Council
Rowan Arts Council
Fred & Alice Stanback
The Dr. Trevor G.
Williams Estate
The Sarah Kellogg Estate

**Concertmaster's Circle:
\$5,000 - \$9,999**

Anonymous Donations
Rachel Oestreicher
Bernheim -
Blanche & Julian
Robertson Foundation
Rowan Cabarrus
Community College
Foundation
Salisbury-Rowan
Community Foundation

**Benefactor: \$2,500-
\$4,999**

Bill & Gayla Bucher
Tim Gudger & W. Gerald
Cochran
Charles Dabbs
F&M Bank
Mickey & Kay Goodman
Geoffrey & Dottie Hoy *
Dyke & Deborah
Messinger -
Livingstone College
Edward & Susan Norvell
Owen & Elizabeth
Norvell
David Post
Salisbury Symphony
Guild
Bob & Laura Williamson

Sustainer: \$1,000-\$2,499

Greg & Missie Alcorn
John Basinger
Alice & Burl Brady
Mary Frances Edens
Barry & Jerry Elmi
First United Church of
Christ Foundation
Sue Fisher +
Bob & Claudia Galup
Lyndia Heward
Kathleen Hill
Geraldine Hurley
Louis & Judy Kandl
Jason & Diana Keith
Jesse & Kay McCartney
Bud & Betty Mickle
Florence Peck
Thomas & Martha
Reddeck
Martha Smith |
Tom & Trudy
Thompson--
James Taylor & Jean
Wurster

Patron: \$500 - \$999

Steve & Lina Drinkard
Kathy Gregg
Luke & Dawn Hamaty
Steven & Celia Jarrett
David Garling & Frank
Labagnara ^
John & Rosalie Laughlin
Craig & Terri Myers
Jim & Barbara Norman
Paypal Giving Fund
Hap & Annette Roberts
Hunter Scott Safrit
Eric Slipp
Victor & Vickie Wallace
Al & Lyn Wilson
Carol & Acey Worthy

Supporter:

Carolyn Alexander
John & Anne Cave
Dotty Clement
Carol Ann Cody
Bill & Sue Davis
Meg & Jay Dees
Cheryl & Ted Goins
Amy & Will Goodnight
Stephen & Paula
Harrison
Jennifer Hubbard
Milton & Toni Iossi
Renee McCachren
Mark & Jane Ritchie
Mitchell & Liesa Karen
Siegel
Ed Oberle & Mary Beth
Walker
Kay Wilson
Bryan & Mary Wymbs

Member: \$100-\$249

Miles Abernathy
Edward Addison
Clarence Beaver
Sandy Bevels
Mark & Judy Beymer
Davis Cooke & Mark Bias
Dr. Wilbert & Carolyn
Blackman
Cindee Bridges
John & Cris Brincefield
Edna Burger
Renee Capels
Thomas Carlton
Joyce Cavanaugh-Wood
Thomas & Judy
Childress
Jennifer Hubbard &
Steven Cobb
Raymond & Kay Coltrain
Robert Cook
Sarah DeBerry

Donation Box
 Diane Fisher
 Lawana Ford
 David & Anita Foreman
 Brenda Goodman
 Dr. Joel & Joyce Goodwin
 Beatrice Hall ~-
 Luke & Dawn Hamaty
 Jayne M. Hubbard
 John T. Hudson
 Charles Hughes
 Kelly Jeffries
 Buddy Farnan & Linda Jones
 John & Joan Leatherman
 Deborah M Lucas
 Jean McCoy
 Ann Meredith
 Dan & Winnie Mikkelson
 Susan Melville & Charles Monroe
 James & Rosanna Mundy ♥
 Wayne & Jill Nelson
 George & Rebecca Orndorff
 April Oster
 Jean Owen ~
 Carol Palmer
 Dr. Carla & Eric Pence
 Patricia Pierce
 Bob & Stephanie Potter
 Timothy & Trisha Proper
 Florence Rabe
 Tushara Rhodes •
 Robert Marts & Enid Rodriguez
 Gerald Rush
 Susan & Joe Sember
 Jo Ann Shaw
 Larry & Jo Ann Shaw
 Missy Shives
 Bethany Sinnott
 Angie Fowler Smith
 Keyth Kars & Elaine Spalding
 Todd & Mary Heather Steinman
 Betty Sunding
 Thomas & Barbara Teichroew
 Dorothy Thomason
 Jane Watson
 Sharon Wilkins
 Robert & Peggy Wilson
 Marvin Wingate ^
 Gary & Patricia Wood
 Elizabeth Woods

Terry & Terry Brandi
 Molly Bronson
 Sheila Brownlow
 Dean Burgos
 Roberta Cagle
 Tina Cagle
 Charities Aid Foundation
 Juliet Connery
 John & Lee Cowan
 Jerald Croyle
 Deb Davies
 Cindy Deaton
 Sherman Distin
 Ray Eudy
 Cindy Fink
 Cheryl Florin
 Marie Higgins
 Karen Hobson
 Rosemary & Karl Kinard
 Shirley McNeil
 Carolyn Miller
 Anne Palmer
 Tina Parks
 Jeffrey Peak
 Jody Perrell
 Greg Rapp
 Kathryn Rusher
 Cynthia Sheaffer
 Tamara Sheffield
 Ronald J Shroads
 Elsie Smoluk
 James Spencer
 Charles Steinman
 Katelyn Walsh
 Farrah Wood

* In honor of Karl & Rosemary Kinard
 ~ In memory of J. Foster Owen
 • In honor of Bryan Speigner III & Sydney Speigner
 ♥ In honor of David Hagy
 - In memory of Charles A. Bernheim
 + In memory of Paul Fisher
 | In memory of Tom E. Smith
 ↵ In memory of Mary Messinger
 ^ In honor of Education Director Beth Cook
 -- In honor of Stephanie Potter
 ~- In memory of Bill Greig

Friend:

Tracey Almond
 Darlene Ball
 Bar Donations
 Leigh Baran
 Alexa Bartel
 Matthew Beaver
 Jody Blackwell

SUPPORTERS OF THE 2022-2023 SEASON

As we continue in our 57th season with the orchestra, we want to recognize the contributions of those who gave in our previous season. This listing represents all support received in our previous season which ran July 1, 2022 through June 30, 2023. Thank You to those who helped make last season a wonderful success. Your support is what makes Rowan County a lot more musical.

Conductor's Circle:

\$10,000 and Above

NC Arts Council
Rowan Arts Council
Fred & Alice Stanback

Concertmaster's Circle:

\$5,000 - \$9,999

Rachel Bernheim
Catawba College
Salisbury Symphony Guild
The Blanche & Julian
Robertson Foundation
The Martha West Estate
Trinity Oaks

Benefactors: \$2,500- \$4,999

Bill & Gayla Bucher
Charities Aid Foundation
Wink & Christy Cline
Dr. W. Gerald Cochran &
Tim Gudger
Raymond & Kay Coltrain
Bill & Sue Davis
Mike & Betsy Harris
Livingstone College
Edward & Susan Norvell
Salisbury Rowan
Community Foundation

Sustainers: \$1,000-\$2,499

Greg & Missie Alcorn
Alice & Burl Brady
Steven & Pam Carson
First United Church of
Christ Foundation
Sue Fisher ~
Lyndia Heward
Geoffrey & Dottie Hoy
Jason & Diana Keith
Dr. Frank Labagnara &
David Garling *

Lois Latimer ~
Jesse & Kay McCartney
Owen & Elizabeth Norvell
Florence Peck
Barry Phillips & Jerry Elmi
Piedmont Plastic & Oral
Surgery
John & Pam Schaffer
Bethany Sinnott
Clay & Martha Smith
Tom & Martha Smith
The Glenn E. & Addie G.
Ketner Family Foundation
Tom & Trudy Thompson

Patrons: \$500 - \$999

Karen & Henry Alexander
John Basinger
Beacon Hall Inc.
Bryan Wymbys Attorney
at Law
Shawn & Leah Campion
Carolina Curbing
Company
John & Anne Cave
Steven & Jennifer
Hubbard Cobb
Meg & Jay Dees
Adrienne & Alex Easley
Claudia & Bob Galup
Francis & Brenda
Goodman
David Hagy
Louis & Judy Kandl
Susan & Bill Kluttz
John & Rosalie Laughlin
Leigh Marsh
Robert & Enid Marts
Jim & Barbara Norman
Lawrence Quinnett
Thomas & Martha
Reddeck ~
Hunter Scott Safrit

Melvin & Jane Shumate
Margaret Stridick
Victor & Vickie Wallace
Wells Fargo Community
Fund
Mary Williams
Alfred & Lyn Wilson
Betty Wilson
Brian Wright
Jean Wurster & James
Taylor

Supporters: \$250 - \$499

Carolyn Alexander
Davis Cooke & Mark Bias
Richard Brownell
Elizabeth Campbell
Diana Cummings
Steve & Lina Drinkard
David Frame
Amy & Will Goodnight
Kyna Grubb
Luke & Dawn Hamaty
Peggy Harris
Stephen & Paula Harrison
Barbara Houchin
Milton & Toni Iossi
Atlee & Patricia Johnson
Jewel Mayberry
Jean Mooney ~
Wayne & Jill Nelson
Ed & Mary Beth Walker
Oberle
Jean Owen
Bob & Stephanie Potter
Andrew Prater
Lisa Queen Sechrest
Greg & Kristin Shields
Chip & Luanne Short
Eric Slipp
Sykes
Thomas Todd
Acey & Carol Worthy

Members: \$100 - \$249

Miles Abernathy
Cynthia Alligood ~
Mary Roberts & Kenneth Austin ~
Matthew Beaver
Tony & Diane Scott Blackwell
Laura Blankenship
Judith & Harry Booth
Ann Bostian
Luke & Mary Boudreault
Terry & Terry Brandi
Henry & Missie Brown
Edna Burger
Connie Bureson
Elizabeth Burns
C-optical
Joyce Cavanaugh-Wood
Tom & Judy Childress
Julian Clark
Dr. Carol Ann Cody
Pam Coffield
Gary Conway
Ed & Elizabeth Cook
Elizabeth Cook
Sara Cook
Carla Copeland-Burns
Rodney Crider
James Dunn
Gene Kruger & Kathleen Dunn
Lynda Errante
F&M Bank
Claudia & James Gardner
Lillian Gascoigne
Joel & Joyce Goodwin
Laura Greene
Nancy Griffith
Beatrice Hall
Michael & Denise Hallett
Mark Hibshman
Gail Hounshell
Jayne Hubbard
Charles Hughes
Georgia Hughes
Nash & Valinda Isenhour
Brad & Debra Ives
Steven & Celia Jarrett
Erik Johnson
Bradley Jones
Linda Jones & Buddy Farnan
Kendra Joyner Miller
Edward Klebaur

John & Constance Kolpticke
Wayne Koontz
Anna Lampidis
Liliana Marcum
Crystal McCloggott
Dennis & Elayne McCoy
Jean McCoy
Frances McGill
Carolyn Miller
Jeanette Morgan
Faye Moser
Craig & Teresa Myers
George & Rebecca Orndorff
Jennifer Palmer
Richard & Patricia Paschall
Eric & Carla Pence
Mark & Barbara Perry
Timothy & Trisha Proper
Florence Rabe
John Reynolds
Jane & Mark Ritchie
Sarah Ross
Salisbury Wine Shop
Sarah Womack
Susan Sember
Jo Ann Shaw
Anita Shirley
Missy Shives
Mitchell & Liesa Siegel
Daniel & Elizabeth Skidmore
Angie Smith
Vernon Smith
Spencer Doll & Toy Museum
Mark & Caroline Stephenson
Donna Stewart
Emily Stirewalt
Betty Sunding
Tom & Barbara Teichroew
Susan & Bobby Trivette
Jason Van Eyk
Gwen & Bill Webb
Sharon Wilkins
Brad & Traci Williams
Robert & Peggy Wilson
Gary & Patricia Wood

* In honor of Education Director:

Beth Cook

In memory of Charles A. Bernheim

In honor of Susan Trivette

~ In honor of Maestro David Hagy



216 Statesville Blvd
Salisbury, NC 28144

(704) 638-0431



325 N Lee Street
Salisbury, NC 28144
www.sofulyoga.com

New Student Special!

2 Weeks Unlimited
for \$25



Music & Arts Camp

July 22-26, 9am-1pm

Rising K-8th graders, lunch provided daily

First Friday Concert Series

June 7th, July 5th, August 2nd, 7pm

Learn more and register for camp at
www.SLS.church/arts
or call 704-633-3221
@stlukessalisbury



Arts at St. Luke's

*Sharing outstanding artistic
experiences with our community*



131 W. Council St.
Downtown Salisbury

SALISBURY REAL ESTATE



A History of Expertise & Excellence
Extraordinary Reach | Extraordinary Results

- Award-winning agent for historic and vintage properties.
- Unique custom marketing strategy = the widest reach.
- 20 years experience in the Salisbury | Rowan market.

704.213.6846



Greg Rapp Broker/Realtor® | www.RealEstateSalisbury.net



Central Carolina Insurance Agency

Salisbury 704.636.5311
Mooresville 704.664.3973
Concord 704.885.2688



www.centralcarolina.com



INDEPENDENT
INSURANCE AGENTS

*May we never take the arts for granted.
SSO, let the music play on!*



ART for All at Waterworks

- Three annual exhibitions of contemporary fine art and craft by established and emerging artists
- +
- Rotating Rowan County student exhibitions
- +
- Accessible galleries are always **free** to visit
- +
- Art classes & workshops for ages 18 months-100 years.
- +
- Free Community Art Events

*Located in the heart of Historic Salisbury's
East Square Cultural Arts District*

123 East Liberty Street

www.waterworks.org

Gallery Hours: Monday-Friday, 10am-4pm

Saturday, 10am-2pm



Edward Jones

> edwardjones.com | Member SIPC

Investing in and supporting our communities

Enjoy the show!

**For more information,
contact your Edward Jones
Financial Advisor.**

Edward Jones cannot accept gift cards,
cash or checks as donations.



Jolene M Philpott, CFP®, AAMS™

460 Jake Alexander Blvd West
Salisbury, NC 28147-1365
704-633-8300

CEA-9901D-A



La Cava Restaurant

Fine Italian Cuisine

329 South Church St.
Salisbury, NC 28144

RESERVATIONS RECOMMENDED
704-637-7174

Open Monday through Saturday
5:30 p.m. Until –

Catering
Available



115 South Lee St.
Salisbury, NC
28144
704.633.1101



**Large Selection of
Boutique Wine, Mead, Cider & Craft Beer**

Expert Assistance with Food Pairing, Beverage Selection & Party Planning

106 South Main Street ♦ Downtown Salisbury ♦ 704-636-5151
www.salisburywineshop.com ♦ sws@salisburywineshop.com

Tues - Thurs 10am-6pm ♦ Fri 10am-8pm
Sat 10am-6pm ♦ Closed Sun & Mon



Board of Directors

Passionate People With A Purpose

Mark Bias

Jude Joseph

Davis Brown

Frank Labagnara

Carla Copeland-Burns

Sue McHugh

John Cowan

Corian Mincey

Haley Freeman

Barry Phillips

Tim Gudger

Stephanie Potter

Ricky Howsare

Andrew Prater

Dottie Hoy

Lawrence Quinnett

Ben Jones

Angie Smith

Jean Wurster

Rowan
Cabarrus

COMMUNITY COLLEGE

Celebrating 60 Years of Community | 1963-2023

WWW.RCCC.EDU | 704-216-RCCC (7222)



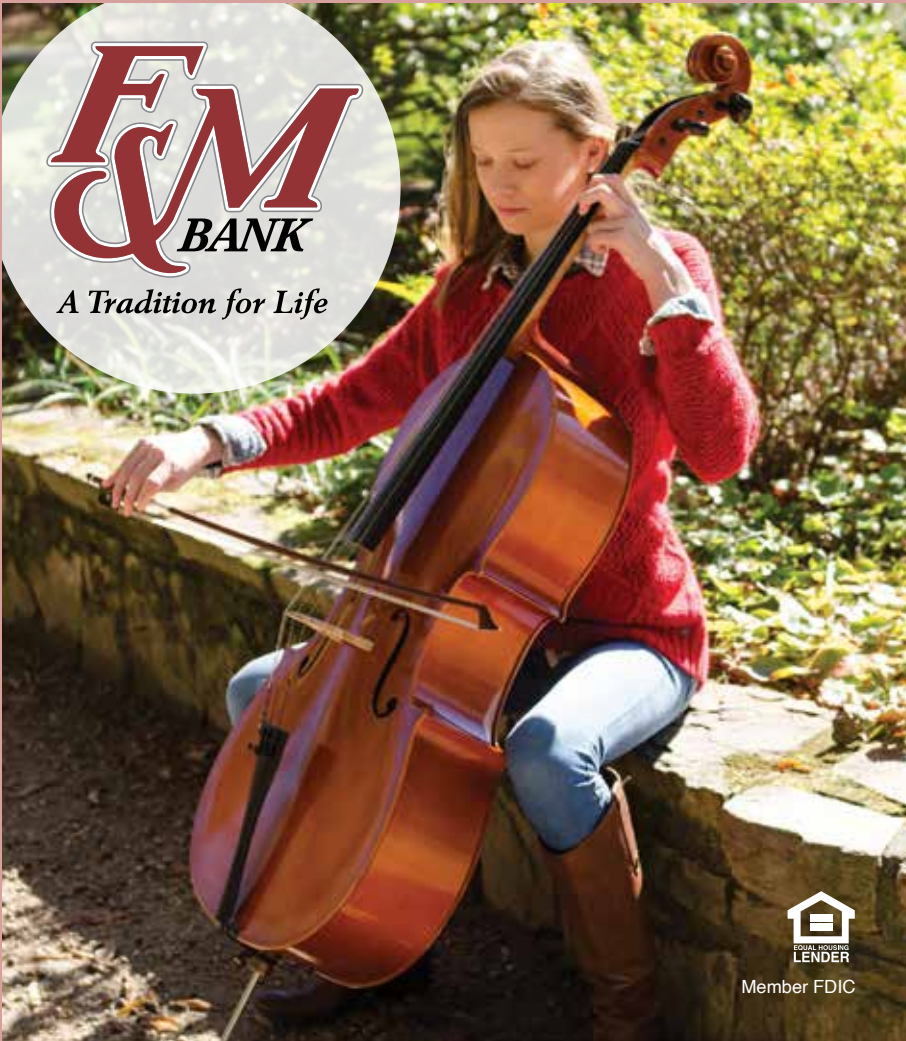
These advertisers support the Salisbury Symphony with their advertising dollars. Please thank them for their support, and be sure to patronize their business whenever you can. Thank you!

Arts at St. Luke's	30	Rowan County Arts Council	10
Band Attic.....	10	Rowan Salisbury Association of	
Catawba College		Educators	11
Music	7	Rowan-Cabarrus Community	
Theatre	8	College	34
Central Carolina Insurance	10	Salisbury Animal Hospital	6
Clonger Ford-Toyota	9	Salisbury Flower Shop.....	11
Cynthia A. Thomas, CPA	11	Salisbury Real Estate.....	31
David Post	3	Salisbury Wine Shop.....	33
Downtown Salisbury Inc	11	SoFul Yoga	30
Edward Jones: Jolene Philpott	32	South Main Book Company.....	11
F&M Bank <i>back cover</i>	36	Stichin' Post.....	11
Godley's Garden Center	6	Trinity Oaks Retirement	
Jennifer S. Weaver CPA, PA	30	Community	14
La Cava.....	33	Waterworks.....	32
Lettered Lily.....	16	WDAV.....	12
Meals On Wheels Rowan.....	10	White Rabbit Cocktail Parlour &	
Rowan County Youth Services		Wonderland Barcade	6
Bureau, Inc.....	15		

Advertising in the Salisbury Symphony's concert programs is a great way to show that you and your business care about the Arts in our community. Call the Symphony Office at (704) 216-1513 if you would like to know more about how your business can participate!



A Tradition for Life



Member FDIC

LOOKING FOR A BANK THAT IS IN
HARMONY
WITH YOUR LIFE?

F&M Bank offers an ovation-worthy lineup of financial solutions, backed by award-winning service that will move you. That's F&M Bank. Visit us at fmbnc.com.