



STARS & SPACE

January 20, 2024 | 7:30pm
Keppel Auditorium, Catawba College



Proud to support the
Salisbury Symphony!

"Music to the ears
of the community"

David Post



Board of Directors

Passionate People With A Purpose

Mark Bias

Jude Joseph

Davis Brown

Frank Labagnara

Carla Copeland-Burns

Sue McHugh

John Cowan

Corian Mincey

Haley Freeman

Barry Phillips

Tim Gudger

Stephanie Potter

Ricky Howsare

Andrew Prater

Dottie Hoy

Lawrence Quinnett

Ben Jones

Angie Smith

Jean Wurster

Rowan
Cabarrus
COMMUNITY COLLEGE



Celebrating 60 Years of Community | 1963-2023

WWW.RCCC.EDU | 704-216-RCCC (7222)



Orchestra Series

A River Runs Through It
September 9, 2023 | 7:30pm
Conductor: Peter Askim



Stars & Space
January 20, 2024 | 7:30pm
Conductor: Kelly Corcoran

Enchanting Sounds
March 9, 2024 | 7:30pm
Conductor: Michelle DiRusso



Musical Inspirations
April 27, 2024 | 7:30pm
Conductor: Kalena Bovell

Hope & Lifting
May 18, 2024 | 7:30pm
Conductor: Daniel Wiley



**All Orchestra Series Performances are held at Keppel
Auditorium, Catawba College**

Serenade Series

Unknown Duets

October 20, 2023 | 5:30pm

Rowan-Cabarrus

Community College



Now & Then

November 3, 2023 | 5:30pm

Little Tubman Theatre

Livingstone

Piano Trio

February 25, 2024 | 3:00pm

The Hotel

Livingstone College



Violin/ Viola

April 20, 2024 | 3:00pm

The Norvell

Salisbury - NC

Mandolins & More

June 9, 2024 | 6:00pm

Hedrick Theatre

Catawba College



Tickets and more information:

www.salisburysymphony.org





The White Rabbit Cocktail Parlour

A place for members who love music, cocktails, great food, and a fabulous ambiance.

Join us before or after the Symphony to enjoy an evening full of experiences to excite all your senses.

We are open from 5pm until 10pm Wednesday & Thursday. From 5pm until 10pm (or later) on Friday and Saturday. Make your reservations for a cocktail, dessert, or dinner. (Kitchen is open until 10pm or later with reservations)

We are located at 5 Easy Street behind the Water Works Gallery. You may park in the F&M Bank lot, or the Trolley Barn lot.

For reservations you may contact us at (704) 645-7670.

Memberships are available for purchase at your first visit for a cost of \$5/day per person, \$25/year for an individual, or \$40/year for a couple.

For additional information visit us at www.WhiteRabbitCocktailParlour.com or visit us on Facebook.

THE ANIMAL CARE CENTER OF SALISBURY



1500 E Innes Street
Salisbury, NC 28147
704-637-0227



Godley's
GARDEN
CENTER
& NURSERY, Inc.

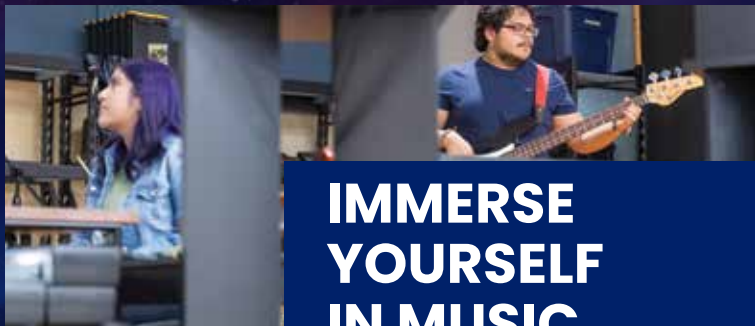
2281 Statesville Blvd
Salisbury, NC 28147
704-638-0082

www.godleysgardencenter.com

JOIN THE SYMPHONY GUILD!

A vibrant group of volunteers
who LOVE the fact that
Salisbury, North Carolina has its
OWN orchestra! Bragging rights
HERE!

Speak with a team member today!



IMMERSE YOURSELF IN MUSIC

6 Concentrations

1 of the only Popular Music Programs in the U.S.

Faculty with Real World Experience

Pursue music your way

Small School. Big Opportunities.



EST.
1851

CATAWBA
COLLEGE

Transform. Inspire. Belong.

1.800.CATAWBA
catawba.edu/music



**Change the Face of American Theatre
While Connecting with the World**

Catawba College's Theatre Arts program seeks to cultivate the growth of well-rounded artists and scholars who are accomplished leaders and theatre-makers, valuing creativity and collaboration as a way of understanding and connecting with the world.

YOUR DREAM CAR
YOUR BUDGET!



Toyota Dealer Salisbury NC

Welcome to Cloninger Toyota! As a renowned full-service Toyota dealer in Salisbury, NC, we help shoppers from Mooresville to Huntersville to Lexington with all their automotive needs.

Whether you're searching for a new Toyota car or need an oil change for your current one, we're here to help you out.

511 Jake Alexander Blvd S | Salisbury, NC 28147

www.cloningertoyota.com

**The Cloninger Toyota
Advantage Program**

**Always working to be
"Just Better" for you!**



Just Better



**Ready to Deliver?
Volunteer Drivers
Needed**

**704-633-0352
mowrowan.org**

SALISBURY FLOWER SHOP

1628 WEST INNES STREET
KETNER CENTER • SALISBURY, NC

704-633-5310

www.salisburyflowershop.net

Fresh & Silk Flowers • Weddings
Balloons • Gifts

**"WE WANT TO BE
YOUR FLOWER SHOP"**

Cynthia A. Thomas
Certified Public Accountant

109 Ackert Avenue
Salisbury, NC 28144
(704) 636-0911
catcpa@yahoo.com

D O W N T O W N



SALISBURY
NORTH CAROLINA

A Main Street Original



Explore historic Downtown Salisbury, a Carolina original since 1753. Enjoy our unique shops and dining, antiques stores, museums, galleries, festivals and more.

With 25 blocks of Downtown, including a farmer's market, theaters, shops, two breweries, a historic train depot and our beautiful new Bell Tower Green Park, we have something for everyone.

A ROUND OF APPLAUSE FOR THE STAFF & STUDENTS OF

ROWAN-SALISBURY SCHOOLS

PUBLIC SCHOOLS PROVIDE

- * Licensed NC Teachers in over 100 areas including:
Arts Education - Core Subjects - Career & Technical Education - Exceptional Children, etc.
- * Real-world experiences through connections with a broad and diverse community
- * Transparent academic accountability

**"EDUCATION IS THE FOUNDATION FOR ALL WE DO IN LIFE... IT SHAPES WHO
WE ARE AND WHAT WE ASPIRE TO BE." - FORMER NC GOVERNOR JIM HUNT**



Stitchin' Post & Gifts
GIFTS • APPAREL • ACCESSORIES

104 South Main Street
Salisbury, NC 28144

704-637-0708

SOUTH MAIN
BOOK COMPANY



An independent bookstore in an independent
community

110 S Main Street | 704.630.9788

.calm

89.9 FM / WDAV.ORG / MOBILE APP / SMART SPEAKER



The Classical Oasis For Your Mind, Body, and Soul



Programs for Young Musicians



SUMMER MUSIC CAMP

A two-week camp filled with music, learning, and fun. Grow on your instrument, meet fellow musical friends, and unleash your creativity.

AFTER SCHOOL STRINGS

Beginners and intermediate players can enhance their skills through group instruction. An engaging and supportive environment to learn and grow musically.



YOUTH ORCHESTRA

Led by a dedicated director, you'll have the opportunity to refine your talents and perform alongside talented peers.

NUTCRACKER CHORUS

Experience the magic of the holiday season by singing with the Salisbury Symphony at their annual Nutcracker performance.



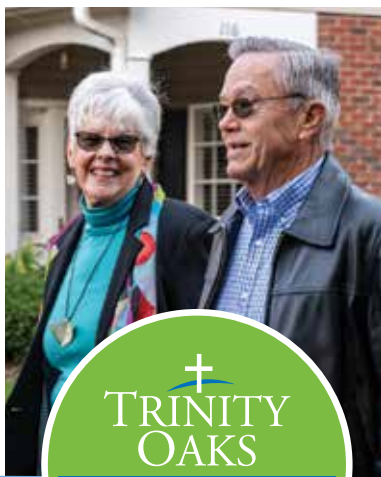
salisburysymphony.org/learn





SMILING FACES & FRIENDSHIPS ABOUND

- 24-Hour Security
- Bistro, Outdoor & Full-Service Dining
- Fitness Center
- Full-Service Bank
- Hair Salon
- Housekeeping
- Indoor Heated Pool
- Library
- Lifelong Learning
- Local Transportation
- Maintenance Free
- On & Off-Site Activities
- Pet Friendly



+

TRINITY
OAKS

ACTIVE SENIOR LIVING
HEALTH & REHAB
TRINITY AT HOME

Trinity Oaks: 704-633-1002

Trinity at Home: 704-603-2776

Trinity Oaks Health & Rehab: 704-637-3784



67% of people who abuse prescription drugs get them from family or friends. Secure and dispose of medications properly.

He gets his musical ability from his dad.

She gets her love for classical music from her mom.

They get their drugs from their grandparents' medicine cabinets.

LOCK YOUR MEDS

For more information, visit www.YSUProwan.org



Help us make musical memories for everyone!



Donate Today

salisburysymphony.org/giving



*Your local stationer
providing quality design services and products
since 2011*

the lettered *Lily*
design studio

113 West Fisher Street · Salisbury, NC 28144
704.754.5973
www.theletteredlily.com
f t #theletteredlily



ABOUT US

The Salisbury Symphony Orchestra is a professional symphony orchestra home-based in Salisbury, North Carolina.

We offer Orchestra Concerts consisting of forty-five to ninety musicians that perform five to seven concerts annually, typically in Keppel Auditorium on the Catawba College campus or Varick Auditorium on the Livingstone College campus. Serenade performances featuring small ensembles from our orchestra are known to play throughout Rowan County in intimate venues.

We perform a large variety of repertoire from early classical works to recent pops selections, often with guest soloists and performers of note from all over the world. Particularly poignant offerings are our annual Nutcracker Performance and free outdoor "Pops at the Post" celebration, a free, outdoor event held in downtown Salisbury and co-sponsored by the Post, an event which brings thousands of visitors to Salisbury each year.

At the Salisbury Symphony, education intertwines seamlessly with passion. After School Strings aims to spark the flames of musical talent in the young, while our Youth Orchestra offers a collaborative stage for budding prodigies to craft musical masterpieces. Experience music anew with our Summer Music Camp; a gateway for novices and a furthering journey for the advanced. For adults yearning to explore or revisit the world of strings, our Adult String Classes offer a warm, welcoming environment.

With In-school Mini-Concerts, 3rd and 4th graders get a taste of orchestral magic right in their classrooms. We also curate performances exclusively for 5th graders, introducing them to the vast symphonic landscape. Recognizing the therapeutic power of music, our Extended Care Facility Concerts aim to touch souls, offering peace and solace. And with Scholarship Opportunities, we ensure that the doors of musical discovery remain open to all, irrespective of financial backgrounds.



THANK YOU SPONORS



Orchestra Series:

Fred & Alice Stanback

Concert:

Dyke and Deborah Messinger

IN MEMORY OF MARY MESINGER

Conductor:

**Rowan-Cabarrus
Community College**

Music:

Edward & Susan Norvell

Section:

Barry Phillips & Jerry Elmi

Bud & Betty Mickle

STARS & SPACE

Conductor: Kelly Corcoran

Starburst for String Orchestra

Jessie Montgomery (1981 -)

Sinfonia (for Orbiting Spheres)

Missy Mazzoli (1980 -)

The Planets

Gustav Holst (1874 - 1934)

I. Mars, the Bringer of War

II. Venus, the Bringer of Peace

III. Mercury, the Winged Messenger

IV. Jupiter, the Bringer of Jollity

V. Saturn, the Bringer of Old Age

VI. Uranus, the Magician

VII. Neptune, the Mystic

Featuring singers from Catawba and Livingstone Colleges

Please join us after the concert for a reception in Crystal Peeler Lounge!

SALISBURY SYMPHONY ORCHESTRA PERSONNEL

VIOLIN I

Daniel Skidmore, Concertmaster
Dick Messenger Chair
In Memoriam
Richard Wohlman,
Associate Concertmaster
Sarah Womack,
Assistant Concertmaster
Mr. & Mrs. Charles Wallace
Endowed Chair
Ulric Schweizer
Rebecca Yarbrough
Judy Booth
Amanda Gentile
Michelle Thompson
Roslyn Willis
Kyria Pidherny
Amanda Matthews
Jane York

VIOLIN II

Laura Blankenship, Principal
Mr. & Mrs. James M. Norman
Endowed Chair
Katherine Miller,
Assistant Principal
Leroy T. Sellers
Endowed Chair
Donna Stewart
Sandra Rathbone
Susan Gallimore
Wilson Pace
Jody Crafford
Cole Freeman
Luke Benton
Mary Ellen Watson
Chang Zhang

VIOLA

Timothy D. Gudger, Principal
Dr. W. Gerald Cochran Chair
Kathryn Middel,
Associate Principal
Erik Johnson,
Acting Assistant Principal
Carter Bradley
Natalie Williford
Dean Burgos
Louise Campbell
Logan Strawn
Courtney Guthrie

CELLO

Ryan Graebert, Principal
Dr. Maynard & Betsy Rich
Endowed Chair
Liz Burns, Assistant Principal
Sally Rocco Ross
Gayle Masarie
Margaret Petty
Zack Bammann
Gustavo Antoniacomi
Diane Bonds

BASS

Mara Barker, Principal
Bill & Sue Davis Chair
Virginia Masius,
Associate Principal
Emery Wegh,
Assistant Principal
Payton Baysinger
Tonya Steward
Steve Landis

FLUTE

Carla Copeland-Burns,
Principal
Mr. & Mrs. Robert L. Cook
Endowed Chair
Laura D. Stevens

FLUTE/PICCOLO

Abby Simoneau

OBOE

Matthew Covington,
Acting Principal
Eric P. Slipp Endowed Chair
Kimberly Tyler

ENGLISH HORN

Joanna Porter
Barbara Wilson Trautwein
Endowed Chair

CLARINET

Eileen Young, Principal
Rich Graham

BASS CLARINET

Cat Keen Hock

BASSOON

Elizabeth Campbell, Principal
Bill & Gayla Bucher Chair
Rebecca Libera

CONTRABASSOON

Brianna Cantwell

HORN

Tyler H. Goodwin, Acting Principal
Mrs. Allen S. Johnson
Endowed Chair
Christopher George
Keith D. Grush
Melanie H. Watson
Joseph K. Goldman
Endowed Chair
Keelan Lovvern
Elliott Stanger

TRUMPET

Luke Boudreault, Principal
Mark Hibshman
Steve Sutton
Anne Linebarger

TROMBONE

Seth Frack, Acting Principal
Bob & Lois Pruehsner
Endowed Chair
Nicholas Lewis

BASS TROMBONE

Sean F. Devlin

EUPHONIUM

Brian Meixner

TUBA

Edward L. Baity, Jr., Principal
Salisbury Symphony Guild
Endowed Chair,
In Honor of Dr. Jean Owen

TIMPANI

Peter Zlotnick, Principal
Stephanie Wilson

PERCUSSION

Amanda Sycamore, Principal
Beverly Naiditch,
Assistant Principal
Faye Moser

HARP

Helen Rifas, Principal
Hannah Blalock-George

KEYBOARD

Renee McCachren, Principal
Katharine W. Osborne
Endowed Chair

EXECUTIVE DIRECTOR

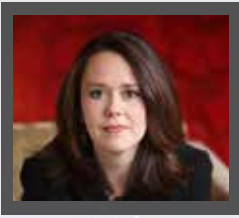
Hunter Scott Safrit

PRODUCTION MANAGER

Samuel Stowe

PERSONNEL MANAGER

Mark Hibshman



Kelly Corcoran
Conductor

Named “Best Classical Conductor” by the Nashville Scene, Kelly Corcoran is Artistic Director & Conductor of Intersection, a contemporary music ensemble now in its 9th season in Nashville. Corcoran founded the Nashville Philharmonic Orchestra and conducted the Nashville Symphony in hundreds of performances for nine seasons as Associate Conductor and Director of the Symphony Chorus. She has guest conducted many major orchestras including The Cleveland Orchestra, the Atlanta, Detroit, Houston and National Symphonies and orchestras in Argentina, England, Germany, Czech Republic, Spain, Mexico and Chile. Corcoran has worked with artists such as Bela Fleck, Leslie Odom Jr. and Amy Grant and conducted National Geographic’s Symphony for our World international tour.

A graduate of Boston Conservatory and Indiana University, a proud alum of the Taki Alsop Conducting Fellowship, the New World Symphony and the Lucerne Festival with Pierre Boulez, her primary mentors are Leonard Slatkin and Marin Alsop. Additionally, Corcoran is on the music faculty at Middle Tennessee State University and Lipscomb University and is proud to serve on the Advisory Council for Music Makes Us (supporting music education) and Nashville’s Health Equity Workgroup. Kelly recently completed her Master of Public Health (MPH) in Health Behavior from the University of Alabama at Birmingham and is interested in the role of the arts in building health in our communities. She currently is a Social Scientist working at the Music Cognition Lab at Vanderbilt University Medical Center. She is also passionate about exploring innovative models for making and sharing classical music.

Learn more about Kelly at www.kellycorcoran.net

STARS & SPACE

Starburst for String Orchestra

Jessie Montgomery (b. 1981)

The title itself—*Starburst*—evokes images of energy and motion, an explosion of star formation, or the sparkle of bright light rays emanating from a central source. In this brief one-movement work for strings, the explosive brilliance of star formation is translated into a kaleidoscope of tone colors in the strings. Pulsing repeated notes, scurrying melodic fragments, rocketing arpeggios, and brief moments of calm, interrupted by colorful and wild turbulence fill this soundscape.

Composer Jessie Montgomery is the recipient of numerous honors, including the prestigious Leonard Bernstein Award from the ASCAP Foundation.

Starburst was premiered by the Sphinx Virtuosi, the flagship professional touring ensemble of The Sphinx Organization, which supports young African-American and Latino string players.

Sinfonia (for Orbiting Spheres)

Missy Mazzoli (b. 1980)

The term “sinfonia” most commonly refers to a type of Baroque music for a small chamber ensemble. But during the medieval period, the term also referred to the hurdy-gurdy, which is a string instrument that produces a constant wheezing drone as a foundation for melodies that gradually emerge. The effect is somewhat like that of a bagpipe.

In imitation of the hurdy-gurdy, the underlying component of this composition is a series of sustained harmonies over which brief melodies gradually emerge and then disappear. The shifting dissonances of the harmony evoke the feeling of outer space, the orbiting spheres, the infinity of the cosmos.

The music gradually becomes more rhythmic and dancelike, creating an atmosphere described by some as a *gymnopédie*, which was the annual festival of ancient Sparta consisting of ceremonial songs and dances performed by the young men. Gradually the sounds fade into the quietness with which the music began. Throughout, the music explores a wide variety of tone colors produced not only by the instruments, but also a synthesizer, recorded electronics, and even several harmonicas to imitate the wheezing drone of the hurdy-gurdy.

The composer Missy Mazzoli, who has received four ASCAP Young Composer Awards as well as a Fulbright Grant to the Netherlands, has composed music for numerous prestigious ensembles. Her *Sinfonia (for Orbiting Spheres)* was commissioned by the Los Angeles Philharmonic.

The Planets

Gustav Holst (1874-1934)

English composer Gustav Holst's Orchestral suite *The Planets* has remained among the most popular orchestral works since its premier in 1918. The suite reflects Holst's deep fascination with astrology and horoscopes, as each of the seven planet known in his day reflects something of the astrological character associated with it.

1. **Mars, the Bringer of War** captures the violence and terror of war with its clash of keys, dissonant harmonies, and uneven meter. The special *col legno* effect of playing string instruments with the wooden part of the bow contributes to the menacing tone of the work. The movement reaches a violently dissonant climax with a horrendously loud chord at the end of the movement.
2. **Venus, the Bringer of Peace** creates a slow and tranquil evocation of outer space and includes warm expressive passages with gentle accompanying harmonies.
3. **Mercury, the Winged Messenger**, the shortest of the movements, is fast and light-hearted, with breathless energy! Holst's quick melodic juxtaposition of two conflicting keys—B-flat and E—contribute to the busy, restless character of the movement.
4. **Jupiter, the Bringer of Jollity** is probably the best-known movement of this suite. The buoyant exuberance of the music represents the jovial cheerfulness of Jupiter's astrological character. The broad, stately melody of the middle section was later named "Thaxted" by Holst after the English village where he spent a good portion of his life. He later adapted the tune to fit the patriotic poem "I Vow to Thee, My Country," and in 1926 Ralph Vaughan Williams included the tune in his *Songs of Praise*.

5. **Saturn, the Bringer of Old Age** opens with a back-and-forth melody that has been compared with the ticking of a clock, a motive that can be heard in various guises throughout the movement, as though marking the passage of time. The solemn and inexorable procession of this movement reaches a loud climax just before the movement slowly fades to close quietly.

6. After a brief introduction in the brass, **Uranus, the Magician** moves into a dancelike mood with startling key changes and rhythmic fluctuations that create rather unexpected transformations in the music. The real magic occurs when an abrupt halt to the tumult fades into a quietness as distant as the planet itself in the night sky.

7. The otherworldly character of **Neptune, the Mystic** quietly introduces a wordless chorus that gradually fades into silence.

*Renee McCachren, Professor
Catawba College*

**YOUR HOSTS FOR TONIGHT'S PROGRAM:
MEMBERS OF THE SALISBURY SYMPHONY'S 2023-2024 SEASON**

The Salisbury Symphony is a fully qualified 501(c)(3) nonprofit organization.

Your tax- deductible donations make up about a half of the Symphony's budget each year and are vitally important to the health of our orchestra. The Salisbury Symphony wishes to gratefully acknowledge support received from the following individuals, who have donated over \$100.00 towards the 2023-2024 Season (as of August 26, 2023):

Conductor's Circle: \$10,000 and Above

Fred & Alice Stanback

Concertmaster's Circle: \$5,000 - \$9,999

Rachel Bernheim ⊥

The Blanche & Julian Robertson
Foundation

Rowan-Cabarrus Community College

Benefactors: \$2,500- \$4,999

Bill & Gayla Bucher

Dr. W. Gerald Cochran & Tim Gudger

Edward & Susan Norvell

Sustainers: \$1,000-\$2,499

Jesse & Kay McCartney

Barry Phillips & Jerry Elmi

Bud & Betty Mickle

Patrons: \$500 - \$999

Louis & Judy Kandl

Jim & Barbara Norman

Supporters: \$250 - \$499

Dr. Carol Ann Cody

Stephen & Paula Harrison

Milton & Toni Iossi

Members: \$100 - \$249

Dorothy Thomason

Geoffrey & Dottie Hoy

Kathy Gregg

Kay Wilson

Gary & Patricia Wood

Betty Sunding

Robert Cook

Dr. Frank Labagnara & David Garling *

Jean & James Taylor Wurster

Florence Rabe

Linda Jones & Buddy Farnan ~

Carol & Acey Worthy

Henry Brown

Jennifer Hubbard & Steven Cobb

* In honor of Education Director: Beth
Cook

⊥ In memory of Charles A. Bernheim

~ In honor of Music Director Emeritus:
David Hagy

SUPPORTERS OF THE 2023-2024 SEASON

As we continue in our 58th season with the orchestra, we want to recognize the contributions of those who gave in our previous season. This listing represents all support received in our previous season which ran July 1, 2023 through June 30, 2024. Thank You to those who helped make last season a wonderful success. Your support is what makes Rowan County a lot more musical.

Conductor's Circle: \$10,000 and Above

Catawba College
North Carolina Arts Council
Fred & Alice Stanback
The Dr. Trevor G. Williams Estate

Concertmaster's Circle: \$5,000 - \$9,999

Rachel Oestreicher Bernheim -
Blanche & Julian Robertson Foundation
Rowan Cabarrus Community College
Foundation

Benefactors: \$2,500- \$4,999

Bill & Gayla Bucher
Tim Gudger & W. Gerald Cochran
Mickey & Kay Goodman
Dyke & Deborah Messinger -
Geoffrey & Dottie Hoy *
Livingstone College
Edward & Susan Norvell
Owen & Elizabeth Norvell
Novant Health
Bob & Laura Williamson

Sustainers: \$1,000-\$2,499

Greg & Missie Alcorn
John Basinger
Barry & Jerry Elmi
Mary Frances Edens
F&M Bank
First United Church of Christ Foundation
Sue Fisher +
Lyndia Heward
Geraldine Hurley
Jason & Diana Keith
Jesse & Kay McCartney
Bud & Betty Mickle
Martha Smith

Patron

Alice & Burl Brady
Louis & Judy Kandl
David Garling & Frank Labagnara ^
Jim & Barbara Norman
Florence Peck
Hap & Annette Roberts
Hunter Scott Safrir

Eric Slipp
Victor & Vickie Wallace
Carol & Acey Worthy

Member

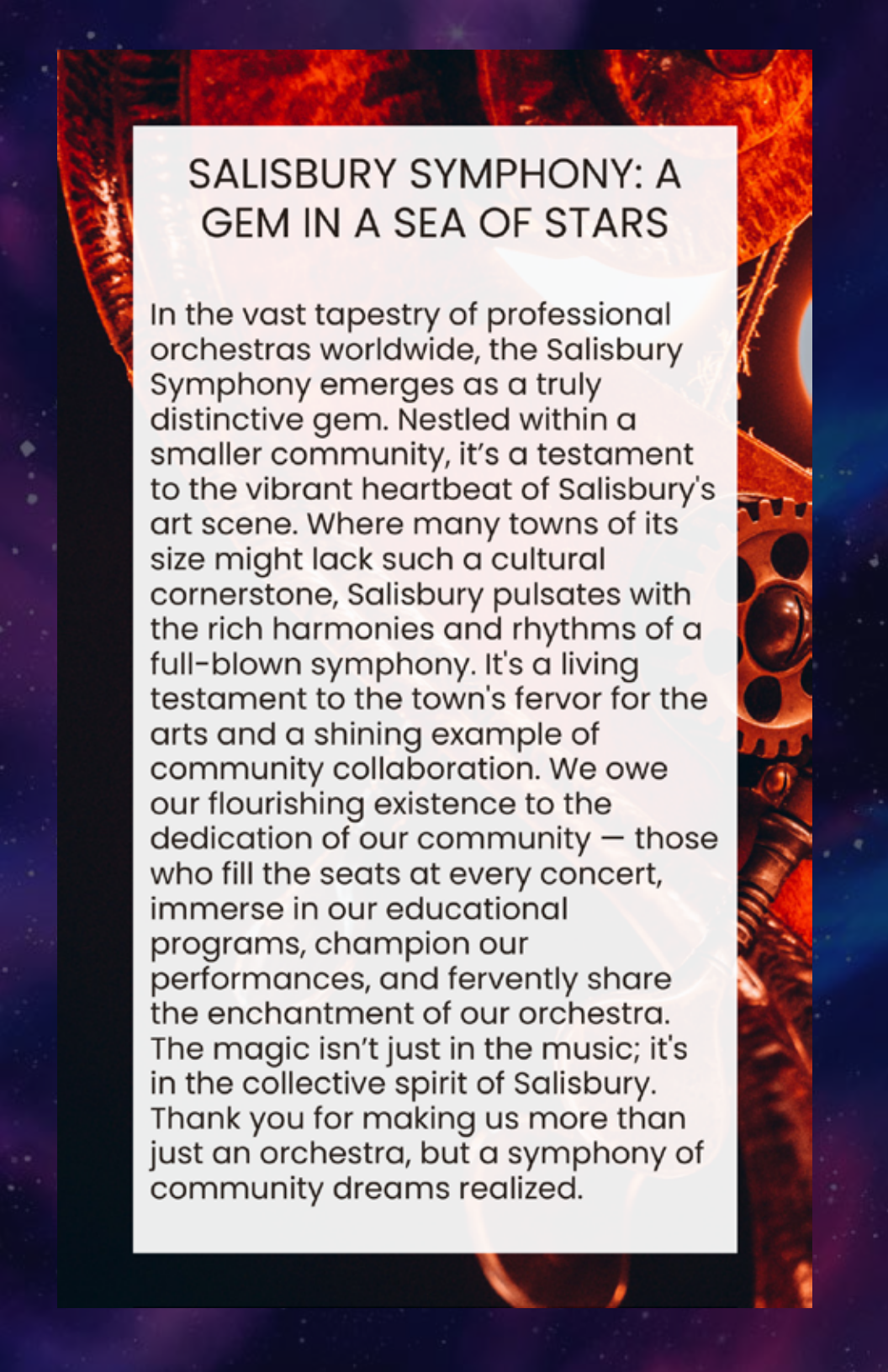
Miles Abernathy
Cindee Bridges
Henry Brown
Henry & Missy Brown
Edna Burger
Renee Capels
Joyce Cavanaugh-Wood
Thomas & Judy Childress
Jennifer Hubbard & Steven Cobb
Robert Cook
Diane Fisher
David & Anita Foreman
Dr. Joel & Joyce Goodwin
Kathy Gregg
John T. Hudson
Buddy Farnan & Linda Jones
John & Joan Leatherman
Deborah M Lucas
Jean McCoy
Ann Meredith
Dan & Winnie Mikkelsen
Susan Melville & Charles Monroe
James & Rosanna Mundy
Dr. Carla & Eric Pence
Patricia Pierce
Bob & Stephanie Potter
Timothy & Trisha Proper
Florence Rabe
Tushara Rhodes •
Susan & Joe Sember
Larry & Jo Ann Shaw
Bethany Sinnott
Angie Fowler Smith
Keyth Kars & Elaine Spalding
Todd & Mary Heather Steinman
Betty Sunding
Thomas & Barbara Teichroew
Dorothy Thomason
Jane Watson
Sharon Wilkins
Kay Wilson
Robert & Peggy Wilson

Gary & Patricia Wood
James Taylor & Jean Wurster

Friend

Miles Abernathy
Cindee Bridges
Henry Brown
Henry & Missy Brown
Edna Burger
Renee Capels
Joyce Cavanaugh-Wood
Thomas & Judy Childress
Jennifer Hubbard & Steven Cobb
Robert Cook
Diane Fisher
David & Anita Foreman
Dr. Joel & Joyce Goodwin
Kathy Gregg
John T. Hudson
Buddy Farnan & Linda Jones
John & Joan Leatherman
Deborah M Lucas
Jean McCoy
Ann Meredith
Dan & Winnie Mikkelsen
Susan Melville & Charles Monroe
James & Rosanna Mundy ♥
Dr. Carla & Eric Pence
Patricia Pierce
Bob & Stephanie Potter
Timothy & Trisha Proper
Florence Rabe
Tushara Rhodes
Susan & Joe Sember
Larry & Jo Ann Shaw
Bethany Sinnott
Angie Fowler Smith
Keyth Kars & Elaine Spalding
Todd & Mary Heather Steinman
Betty Sunding
Thomas & Barbara Teichroew
Dorothy Thomason
Jane Watson
Sharon Wilkins
Kay Wilson
Robert & Peggy Wilson
Gary & Patricia Wood
James Taylor & Jean Wurster

* In honor of Karl & Rosemary Kinard
^ In honor of Peter Askim
• In honor of Bryan Speigner III &
Sydney Speigner
♥ In honor of David Hagy
- In memory of Charles A. Bernheim
+ In memory of Paul Fisher
| In memory of Tom E. Smith
¬ In memory of Mary Messinger



SALISBURY SYMPHONY: A GEM IN A SEA OF STARS

In the vast tapestry of professional orchestras worldwide, the Salisbury Symphony emerges as a truly distinctive gem. Nestled within a smaller community, it's a testament to the vibrant heartbeat of Salisbury's art scene. Where many towns of its size might lack such a cultural cornerstone, Salisbury pulsates with the rich harmonies and rhythms of a full-blown symphony. It's a living testament to the town's fervor for the arts and a shining example of community collaboration. We owe our flourishing existence to the dedication of our community — those who fill the seats at every concert, immerse in our educational programs, champion our performances, and fervently share the enchantment of our orchestra. The magic isn't just in the music; it's in the collective spirit of Salisbury. Thank you for making us more than just an orchestra, but a symphony of community dreams realized.



216 Statesville Blvd
Salisbury, NC 28144

(704) 638-0431



325 N Lee Street
Salisbury, NC 28144
www.sofulyoga.com

**New Student
Special!**

**2 Weeks Unlimited
for \$25**

Arts at St. Luke's

23-24
Season

Tuesdays in October: Noon-Ten Concerts

A variety of outstanding vocal and instrumental concerts, 12:10pm weekly

November 5th: Concert of Remembrance, featuring the Fauré Requiem

Presented by the St. Luke's Choirs and friends, 4pm

December 3rd: Advent Lessons and Carols, 5:30pm

Christmas Day: Organ Noëls, 3pm

A festive concert of seasonal favorites. Stephen Williams, organist

Tuesdays in Lent: Noon-Ten Concerts, 12:10 pm weekly

St. Luke's Episcopal Church

131 W. Council St. Downtown Salisbury



SALISBURY REAL ESTATE



A History of Expertise & Excellence
Extraordinary Reach | Extraordinary Results

- Award-winning agent for historic and vintage properties.
- Unique custom marketing strategy = the widest reach.
- 20 years experience in the Salisbury | Rowan market.

704.213.6846



Greg Rapp Broker/Realtor® | www.RealEstateSalisbury.net



Central Carolina Insurance Agency

Salisbury 704.636.5311
Mooresville 704.664.3973
Concord 704.885.2688



www.centralcarolina.com



INDEPENDENT
INSURANCE AGENTS

*May we never take the arts for granted.
SSO, let the music play on!*



ART for All at Waterworks

Three annual exhibitions of contemporary fine art and craft by established and emerging artists

+ Rotating Rowan County student exhibitions

+ Accessible galleries are always **free** to visit

+ Art classes & workshops for ages 18 months-100 years.

+ Free Community Art Events

*Located in the heart of Historic Salisbury's
East Square Cultural Arts District*

123 East Liberty Street

www.waterworks.org

Gallery Hours: Monday-Friday, 10am-4pm

Saturday, 10am-2pm



Edward Jones®

> edwardjones.com | Member SIPC

Investing in and supporting our communities

Enjoy the show!

For more information,
contact your Edward Jones
Financial Advisor.

Edward Jones cannot accept gift cards,
cash or checks as donations.



Jolene M Philpott, CFP®, AAMS™

460 Jake Alexander Blvd West
Salisbury, NC 28147-1365
704-633-8300

CEA-9901D-A



La Cava Restaurant

Fine Italian Cuisine

329 South Church St.
Salisbury, NC 28144

RESERVATIONS RECOMMENDED

704-637-7174

Open Monday through Saturday
5:30 p.m. Until –

Catering
Available



115 South Lee St.
Salisbury, NC
28144
704.633.1101



Large Selection of
Boutique Wine, Mead, Cider & Craft Beer

Expert Assistance with Food Pairing, Beverage Selection & Party Planning

106 South Main Street ♦ Downtown Salisbury ♦ 704-636-5151
www.salisburywineshop.com ♦ sws@salisburywineshop.com

Tues - Thurs 10am-6pm ♦ Fri 10am-8pm
Sat 10am-6pm ♦ Closed Sun & Mon

AUDIENCE SURVEY

A RIVER RUNS THROUGH IT

Help us craft unforgettable musical moments!
Share your feedback on the candidate and concert. Please hand your completed survey to a symphony team member. Your input helps guide our path to musical excellence!

CANDIDATE QUESTIONS

This Candidate seems to have a good rapport with the orchestra.

This Candidate seems to have a good rapport with the audience, is charismatic, and communicates well.

This Candidate made the concert a positive experience for the listener.

This Candidate would be a good Music Director for the Salisbury Symphony.

RATING SCALE:

Strongly Disagree

Strongly Agree



CONCERT QUESTIONS

How satisfied are you with your experience at tonight's event with the Salisbury Symphony?

How likely are you to recommend a future Salisbury Symphony experience to a friend, family member, or colleague?

RATING SCALE:

1 2 3 4 5
6 7 8 9 10

1 2 3 4 5
6 7 8 9 10

Other comments with regards to tonight's Musical Director:

These advertisers support the Salisbury Symphony with their advertising dollars. Please thank them for their support, and be sure to patronize their business whenever you can. Thank you!

Arts at St. Luke's	30	Rowan Salisbury Association of	
Catawba College		Educators	11
Music	7	Rowan-Cabarrus Community	
Theatre	8	College	3
Central Carolina Insurance	10	Salisbury Animal Hospital	6
Cloninger Ford-Toyota	9	Salisbury Flower Shop.....	11
Cynthia A. Thomas, CPA	11	Salisbury Real Estate	31
David Post <i>inside front cover</i>	2	Salisbury Wine Shop.....	33
Downtown Salisbury Inc	11	SoFul Yoga	30
Edward Jones: Jolene Philpott	32	South Main Book Company.....	11
F&M Bank <i>back cover</i>	36	Stichin' Post	11
Godley's Garden Center	6	Trinity Oaks Retirement	
Jennifer S. Weaver CPA, PA	30	Community	14
La Cava.....	33	Waterworks.....	32
Lettered Lily.....	16	WDAV.....	12
Meals On Wheels Rowan	10	White Rabbit Cocktail Parlour &	
Rowan County Youth Services	15	Wonderland Barcade	6
Bureau, Inc.			

Advertising in the Salisbury Symphony's concert programs is a great way to show that you and your business care about the Arts in our community. Call the Symphony Office at (704) 216-1513 if you would like to know more about how your business can participate!



A Tradition for Life



Member FDIC

LOOKING FOR A BANK THAT IS IN
HARMONY
WITH YOUR LIFE?

F&M Bank offers an ovation-worthy lineup of financial solutions, backed by award-winning service that will move you. That's F&M Bank. Visit us at fmbnc.com.